



HOSHIZAKI

FM-600AWKE FLAKE ICE MAKER / FM-600AWKE-N NUGGET ICE MAKER

Product Description

The FM-600AWKE (-N) is a modular ice maker which produces either flake or nugget ice. The flake and nugget ice is popular for a variety of cooling purposes including the display of fish and fresh produce as well as in the medical world for cooling blood and organs.



- Hoshizaki ice makers are micro computer controlled, controlling the ice making process to perform at its best under varying circumstances, without having to make physical adjustments.
- The characteristics of the ice produced by Hoshizaki ice makers means that 'freeze-burn' is no longer an issue when displaying fresh fish or produce.
- Quality stainless steel auger and evaporator increase the life expectancy of these components and the whole ice maker, as well as reducing costly maintenance visits.
- An easily cleanable air filter allows end users to carry out a routine cleaning schedule, extending product life expectancy and reducing the frequency and costs of maintenance call-outs.
- Due to the auger system the water consumption is equal to the ice production.

Available Models

FM-600AWKE (Water Cooled)
FM-600AWKE-N (Water Cooled)

Ice

Model	Shape
FM-600 AWKE	Flake - Approx. (70% ice hardness, 30% water)
FM-600AWKE-N	Nugget - Approx. (88% ice hardness, 12% water)



Bins

Model	Type of Bin	Bin Capacity Approx.
B-301SA	Modular	144 kg
B-501SA, Top Kit TK 8 D		217 kg
B-801SA, Top Kit TK 8 D + TK 18 D		348 kg

Production

Model	Ice Production per 24h	Temperature	Water Consumption per 24h
FM-600AWKE	Approx. 600 kg Approx. 560 kg Approx. 520 kg	AT.10°C, WT.10°C AT.21°C, WT.15°C AT.32°C, WT.21°C	Approx. 1,685m ³ Approx. 2,333m ³ Approx. 3,125m ³
FM-600AWKE-N	Approx. 490 kg Approx. 460 kg Approx. 420 kg	AT.10°C, WT.10°C AT.21°C, WT.15°C AT.32°C, WT.21°C	Approx. 1,685m ³ Approx. 2,318m ³ Approx. 3,067m ³

Two year warranty

For more information visit our website at www.hoshizaki-europe.com
Hoshizaki Europe B.V. retains the right to change products and their specifications without prior notice.

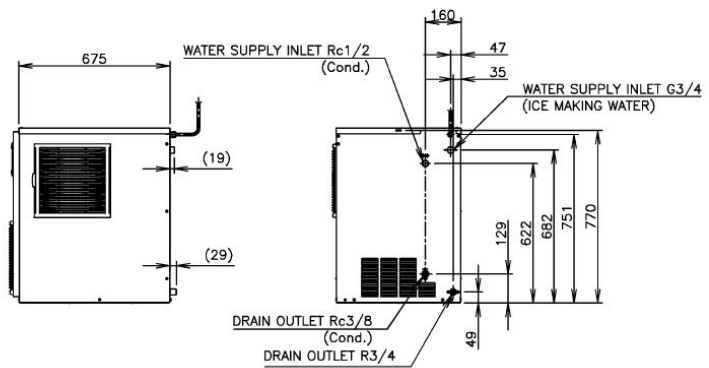
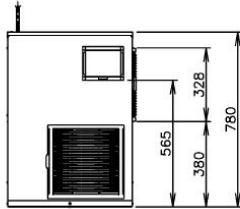
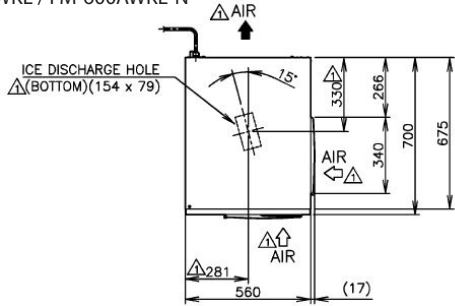




HOSHIZAKI

FM-600AWKE FLAKE ICE MAKER / FM-600AWKE-N NUGGET ICE MAKER

FM-600AWKE / FM-600AWKE-N



Specification	FM-600AWKE	FM-600AWKE-N
Power Supply	1 Phase 220-240V 50Hz Capacity: 4.76kVA (20.7A)	1 Phase 230V 50Hz Capacity: 2.7kVA (11.7A)
Amperage (AT.32°C, WT.21°C)	9.6A Starting: 76A	9.7A Starting: 76A
Electric Consumption	1705W (Power Factor: 77%)	1760W (Power Factor: 78%)
Exterior	Stainless Steel, Galvanized Steel (Rear)	Stainless Steel, Galvanized Steel (Rear)
Connections - Water Supply	Direct Connection to Water Main, Inlet: G3/4, Cond. Inlet: Rc1/2 (Rear)	Direct Connection to Water Main, Inlet: G3/4, Cond. Inlet: Rc1/2" (Rear)
Connections - Drain	Outlet: R3/4, Cond.Outlet Rc3/8 (Rear)	Outlet: R3/4, Cond.Outlet Rc3/8 (Rear)
Ice Making System	Thin ice forming inside Cylinder (Flake Ice)	Thin ice forming inside Cylinder (Nugget Ice)
Compressor	Hermetic	Hermetic
Condenser	Tube in Tube type, Water-cooled	Tube in Tube type, Water-cooled
Evaporator	Tube coiled around Cylinder (Solder Plated)	Tube coiled around Cylinder (Solder Plated)
Refrigerant	R404A	R404A
Ice Making Water Control	Float Switch and Water Valve	Float Switch and Water Valve
Electrical Circuit Protection	Circuit Breaker, Earth Wire	Circuit Breaker, Earth Wire
Refrigerant Circuit Protector	Compressor Internal Motor Protector, Internal Pressure Relief Valve (Auto-reset), Pressure Switch (Auto-reset)	Compressor Internal Motor Protector, Internal Pressure Relief Valve (Auto-reset), Pressure Switch (Auto-reset)
Mechanism Protection	Micro switch (Manual-reset)	Micro switch (Manual-reset)
Interlock	Shutdown by Microprocessor (Manual-reset)	Shutdown by Microprocessor (Manual-reset)
Dimensions Product excl. Packaging	560 x 700 x 780 (W x D x H, mm)	560 x 700 x 780 (W x D x H, mm)
Dimensions Product incl. Packaging	665 x 820 x 950 (W x D x H, mm)	665 x 820 x 950 (W x D x H, mm)
Weight Gross / Net	114 kg / 107 kg	114 kg / 107 kg

Operating conditions

Ambient Temperature	5 - 40°C
Water Supply Temperature	5 - 35°C
Water Supply Pressure	0,05-0,8MPa
Voltage Range	Rated Voltage ± 10%

Accessories

Mounting Bracket
Installation Kit

For more information please contact your local sales office:

Hoshizaki Belgium:
Hoshizaki Deutschland:
Hoshizaki France:
Hoshizaki Iberia:
Hoshizaki Middle East:

info@hoshizaki.be
info@hoshizaki.de
info@hoshizaki.fr
info@hoshizaki.es
sales@hoshizaki.ae

Hoshizaki Nederland:
Hoshizaki United Kingdom:
Other countries:

sales@hoshizaki.nl
uksales@hoshizaki.co.uk
sales@hoshizaki.nl

www.hoshizaki-europe.com